



DRWN. BY:	OKD. BY:
SR	DCS
JOB NO.	DATE:
18084	MAY 2019

SHEET:	<b>M201</b>
OF:	THREE

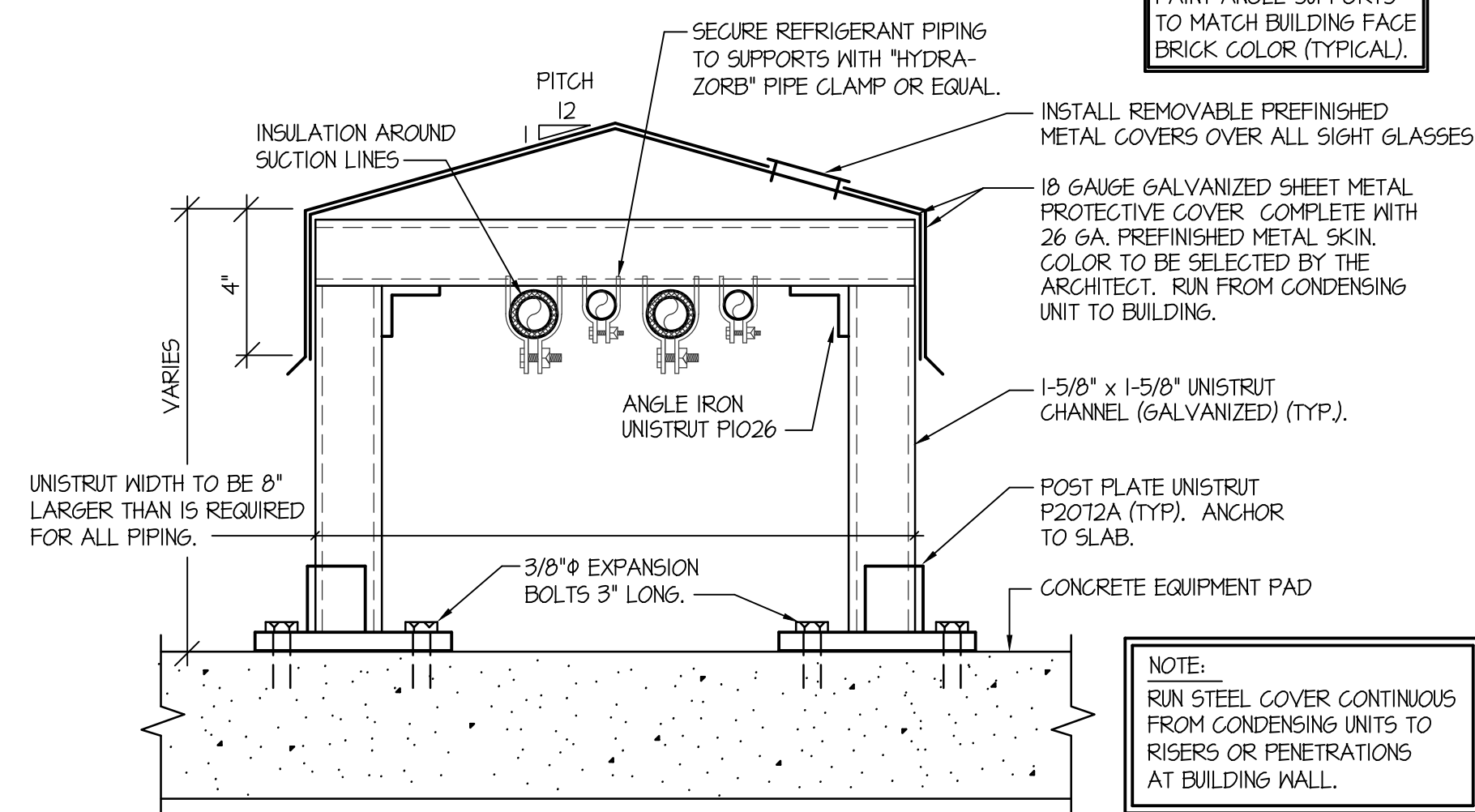
ORIGINAL DRAWING SIGNED BY: DWAYNE C. SUDWECKS  
DATE ORIGINAL SIGNED: MAY 09, 2019  
ORIGINAL ON FILE AT ENGINEERED SYSTEMS ASSOCIATES  
1355 EAST CENTER, POCATELLO, IDAHO 83201

NEW SENSOR ON ROOF. TIE INTO EXISTING CAMPUS POWERLINK SNOW SENSORS. POWERLINK SYSTEM TO SEND SIGNAL TO 3-WAY VALVES TO OPEN UPON DETECTION OF SNOW / TEMPERATURE. PROVIDE RELAYS AS REQUIRED.

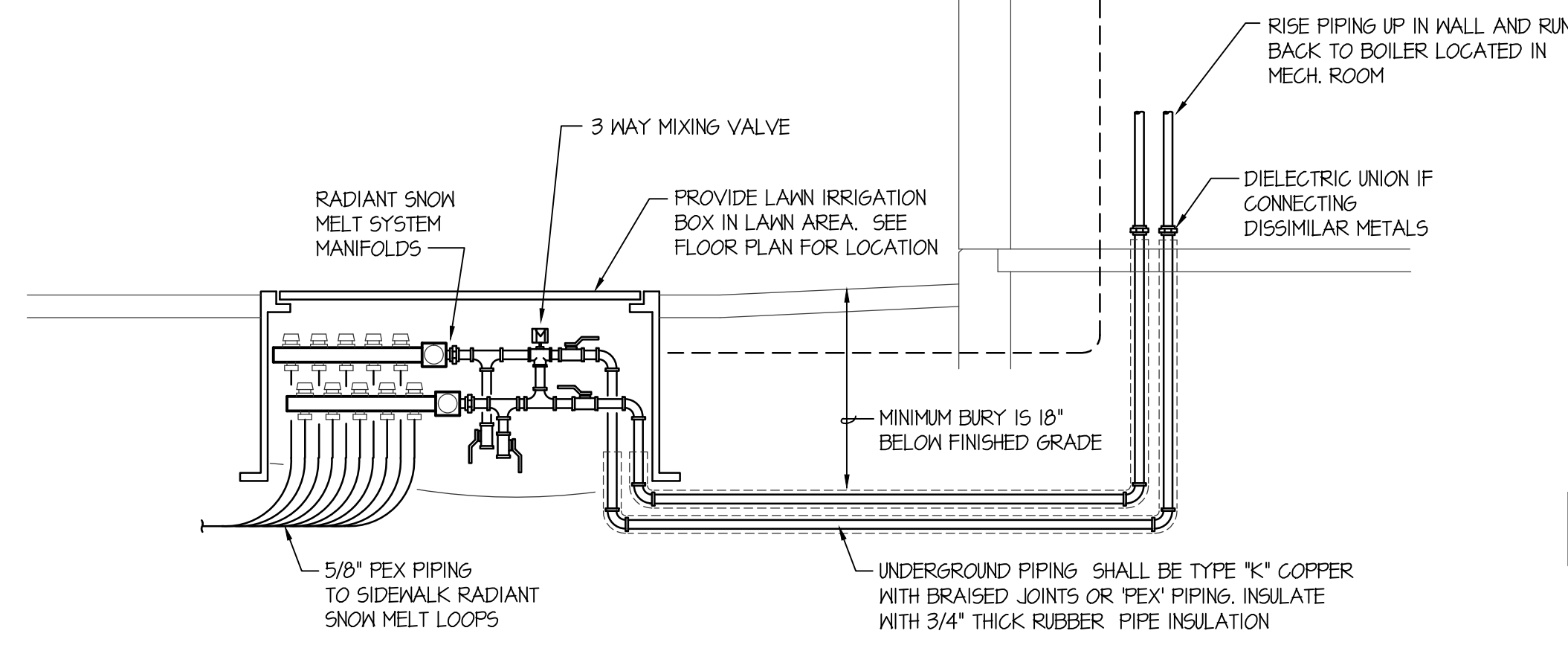
NOTE:  
SNOW MELTING SYSTEM TO BE FILLED WITH 40% ANTIFREEZE SOLUTION. USE ONLY ANTIFREEZE

NOTE:  
PAINT ANGLE SUPPORTS TO MATCH BUILDING FACE BRICK COLOR (TYPICAL).

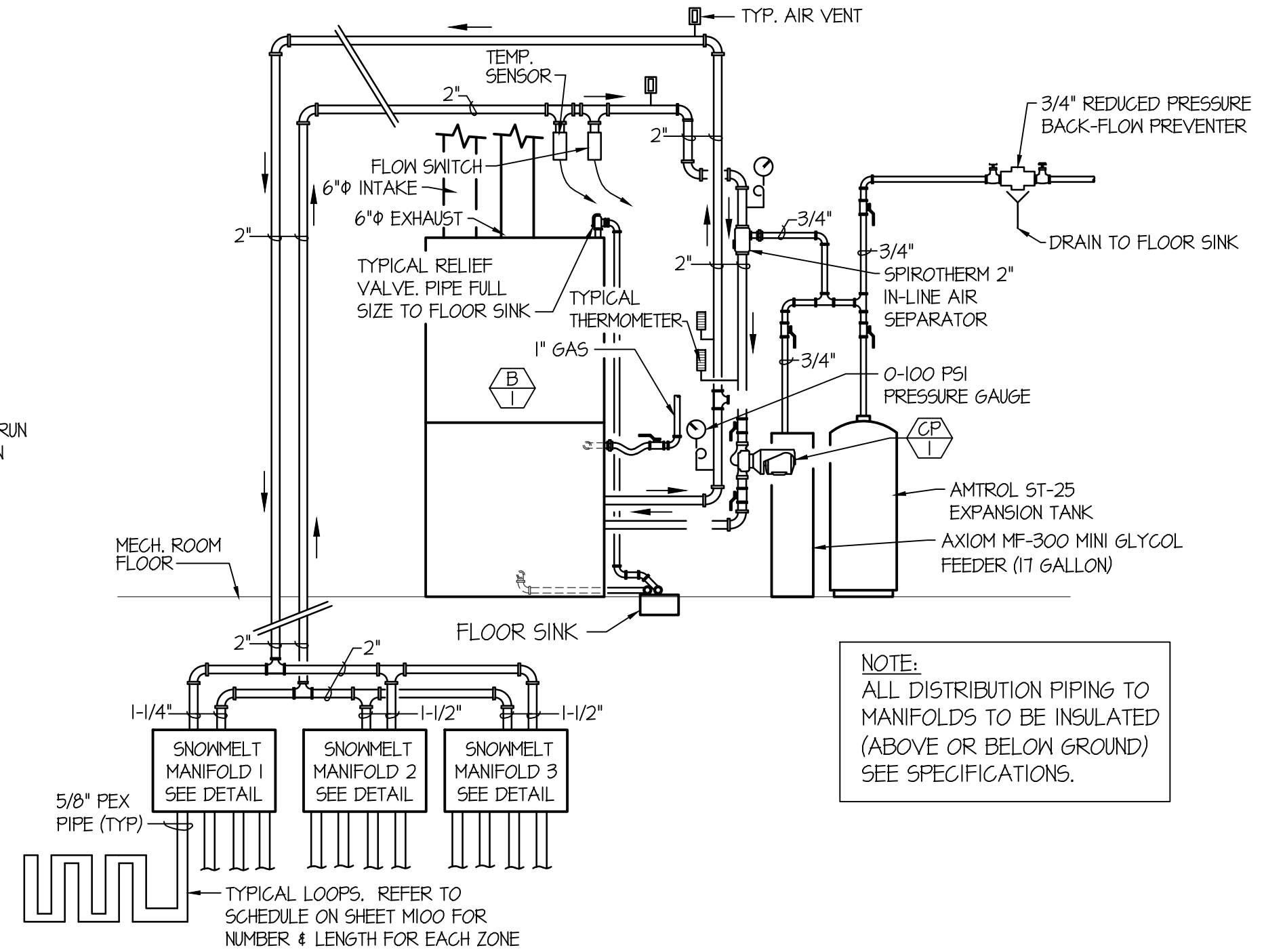
NOTE:  
RIN STEEL COVER CONTINUOUS FROM CONDENSING UNITS TO RISERS OR PENETRATIONS AT BUILDING WALL.



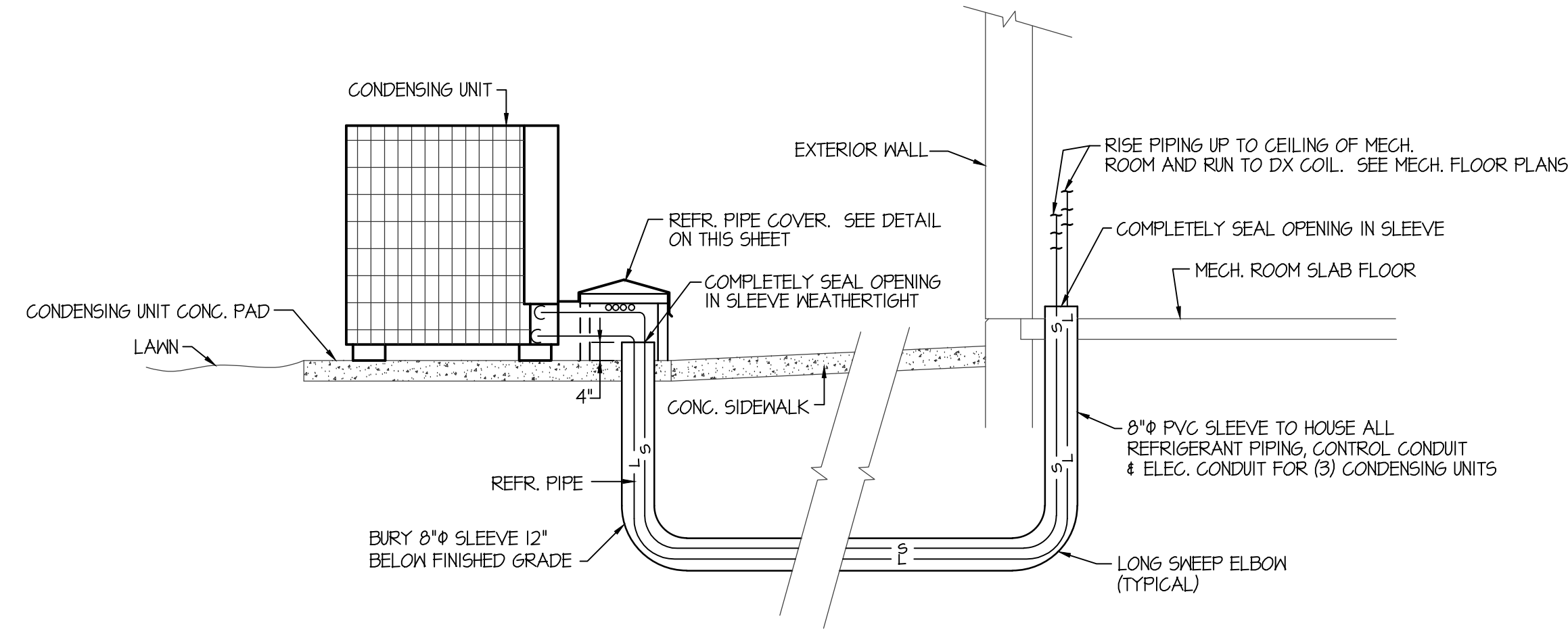
**REFRIGERANT PIPE SUPPORT DETAIL**  
NO SCALE



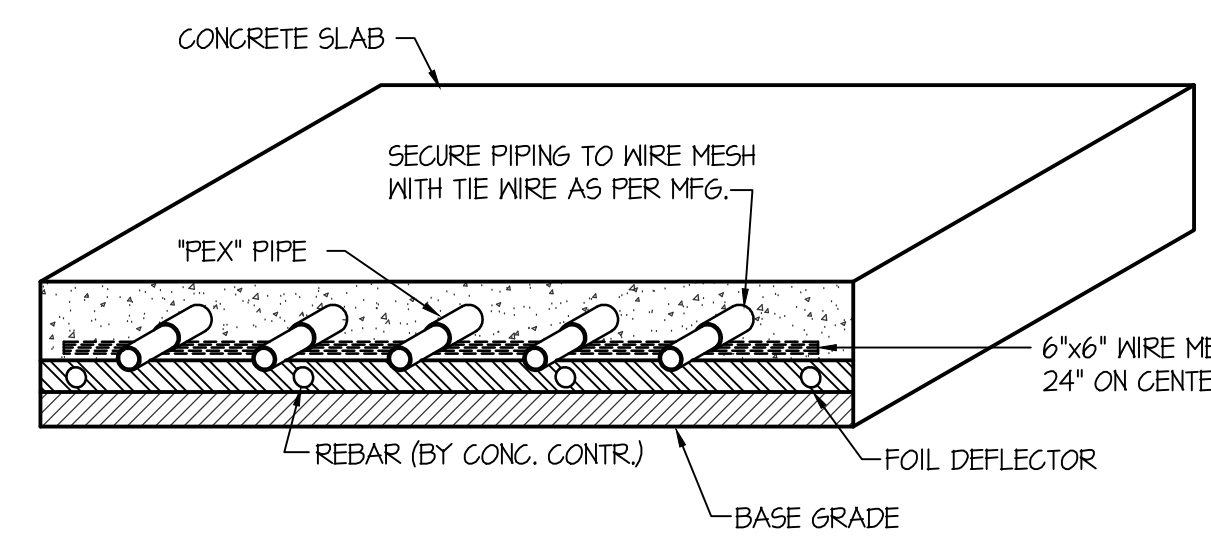
**SNOWMELT MANIFOLD ZONE BOX DETAIL**  
NO SCALE



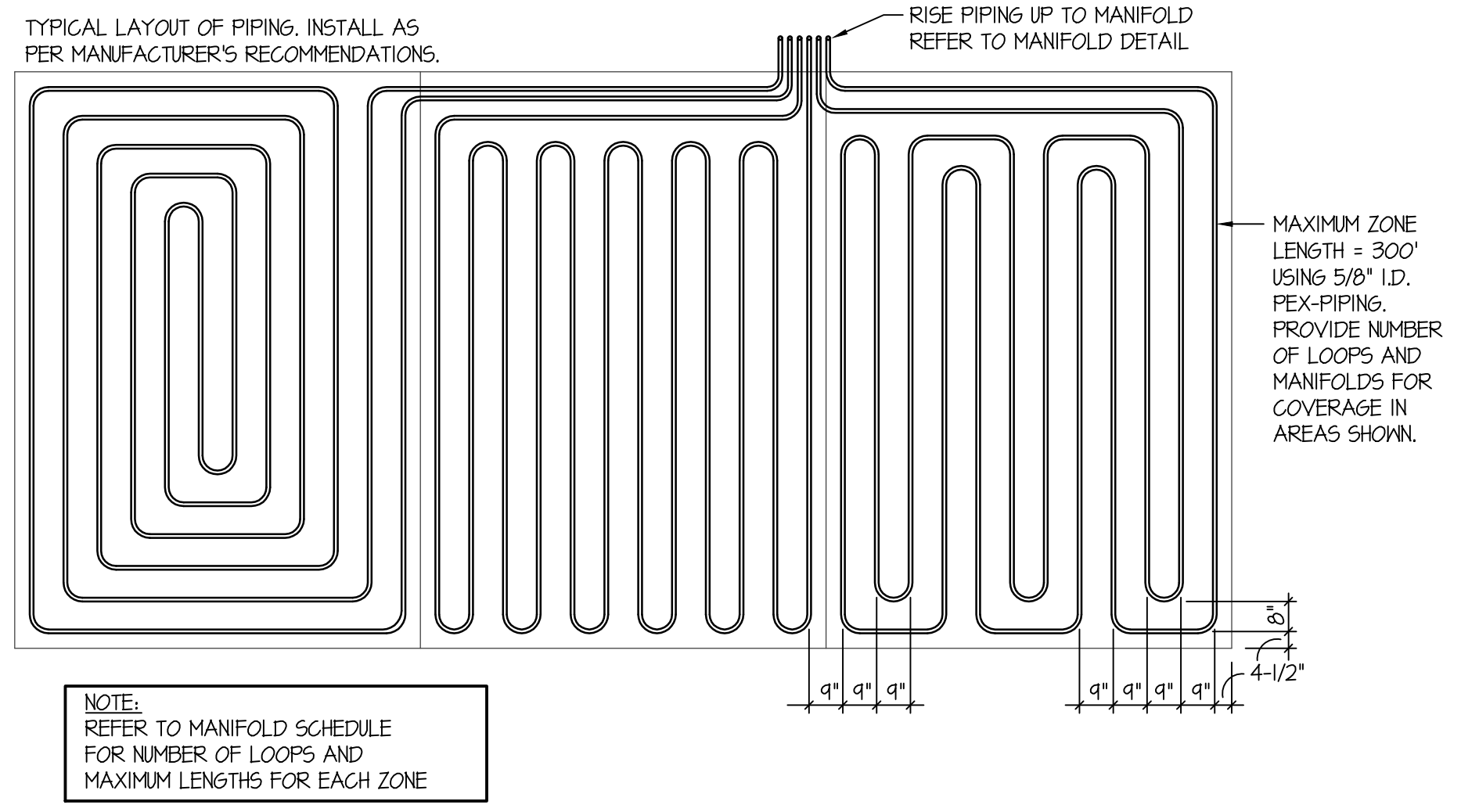
**SNOWMELT BOILER PIPING DIAGRAM**  
NO SCALE



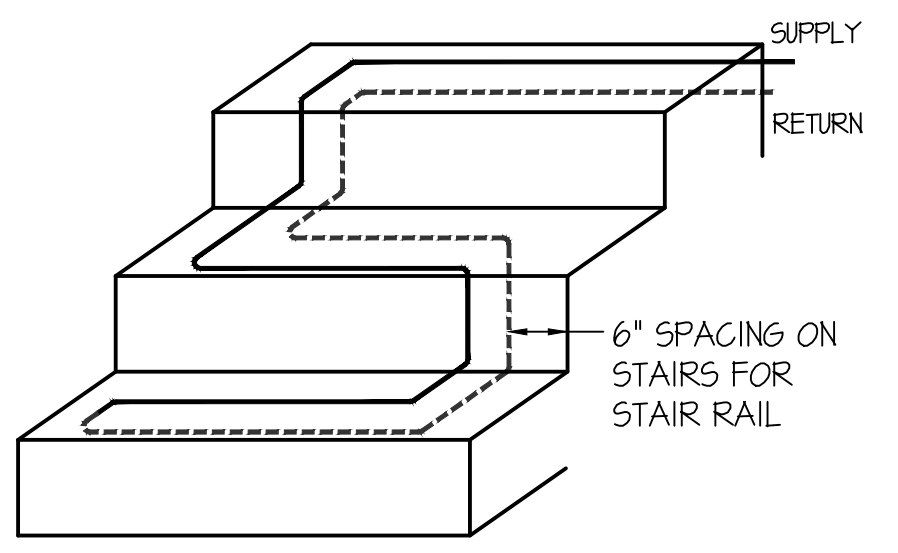
**UNDERSLAB REFRIGERANT PIPING DETAIL**  
NO SCALE



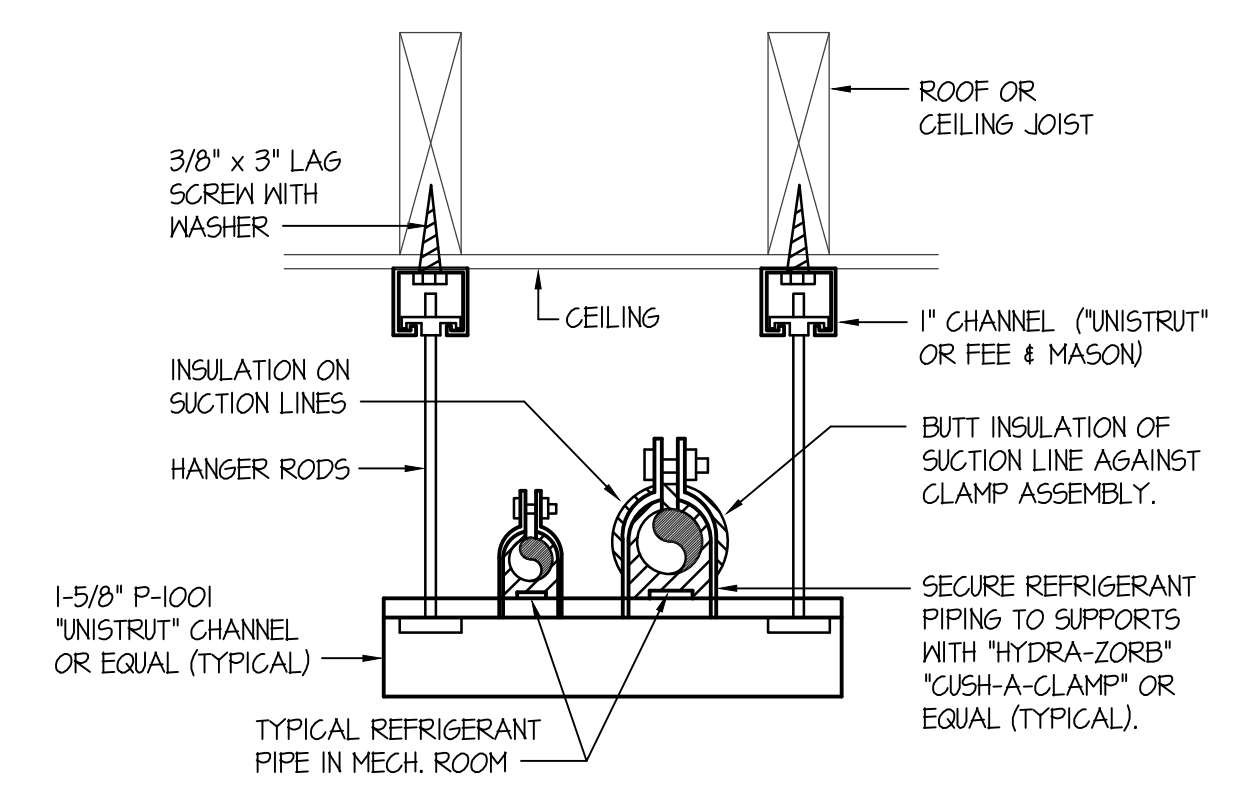
**SNOWMELT PIPING DETAIL**  
NO SCALE



**TYPICAL SNOW MELT PIPING LAY-OUT**  
NO SCALE



**SNOW MELT STAIR PATTERN**  
NO SCALE



**SUSPENDED PIPE SUPPORT**  
NO SCALE